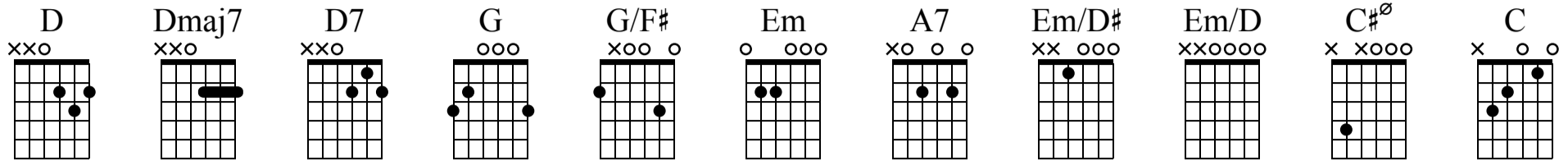


London in the Spring

Passenger

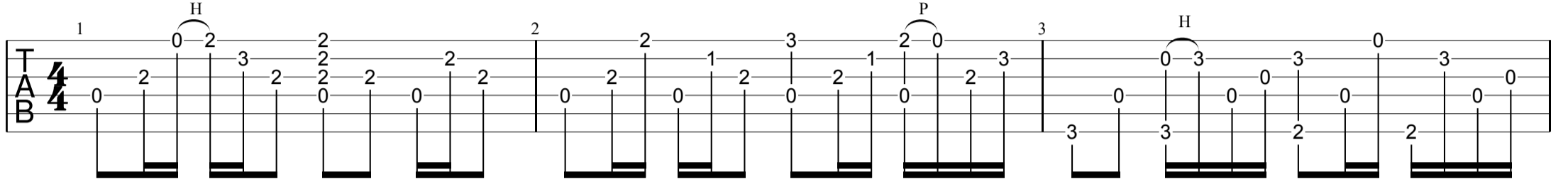
Tabbed by Core's Free Music



Intro - Interlude

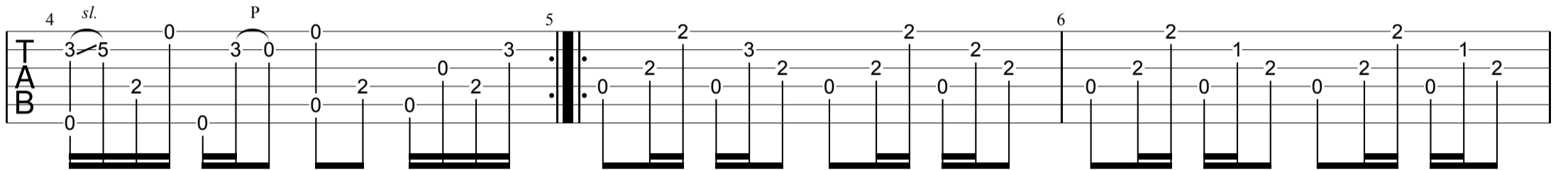
D Dmaj7 D7 G G/F#

Capo fret 2

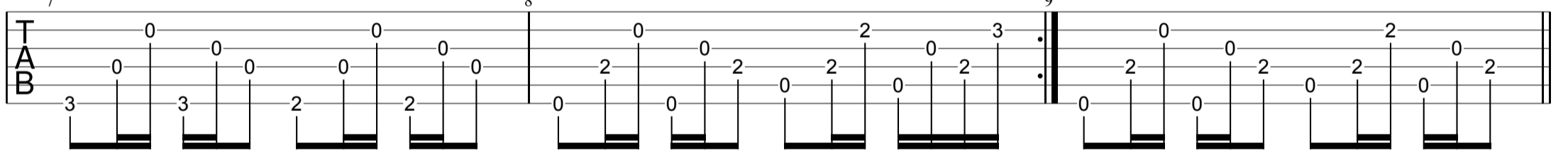


Verse

Em D Dmaj7 D7

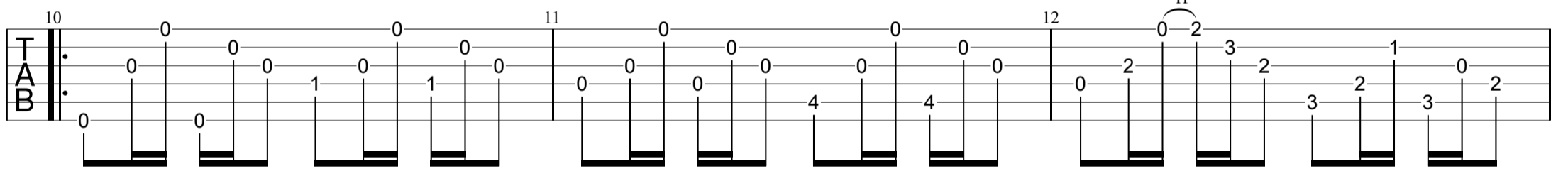


1. 2. Em A7 Em A7

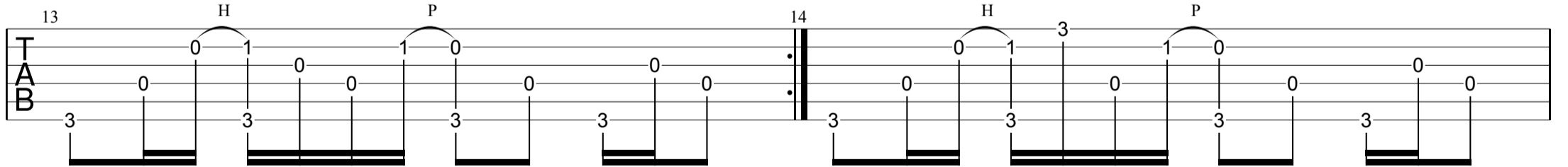


Chorus

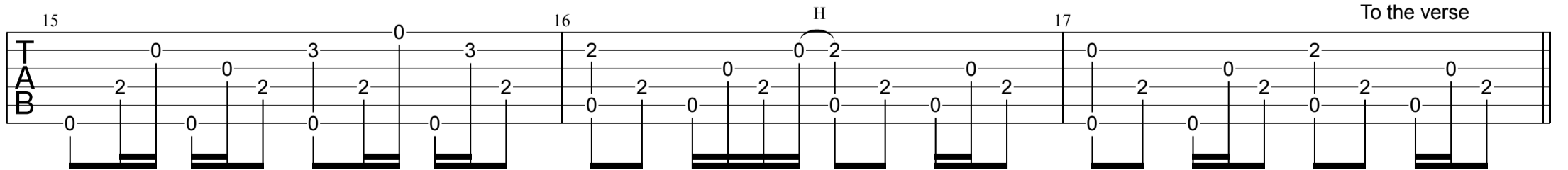
Em Em/D# Em/D C#o D C



1. 2. G G



Em A7 Em A7 To the verse



Last Interlude

Guitar tablature for the piece "Last Interlude". The score is written on two systems of six-line staves, with the top line representing the Treble Clef (TAB) and the bottom line representing the Bass Clef (TAB). The piece is in a key with a D major chord as the starting point.

System 1 (Measures 18-20):

- Measure 18:** Chord **D**. Notes: 0, 2, 0, 2, 3, 2. Includes a **H** (hammer-on) over the 2nd fret.
- Measure 19:** Chord **Dmaj7**. Notes: 2, 2, 0, 2, 2, 2.
- Measure 20:** Chord **D7**. Notes: 0, 2, 0, 2, 1, 2. Includes a **P** (pull-off) over the 2nd fret.

System 2 (Measures 21-23):

- Measure 21:** Chord **Em**. Notes: 3, 5, 0, 2, 0, 0. Includes a **sl.** (slide) from the 3rd to the 5th fret.
- Measure 22:** Chord **A7**. Notes: 2, 0, 2, 3, 0, 0. Includes a **P** (pull-off) over the 3rd fret.
- Measure 23:** Chord **D**. Notes: 0, 2, 0, 3, 0, 0. Includes a **4** (bend) on the 4th fret.

The piece concludes with a final chord **D** in measure 23, indicated by a circled chord diagram (0, 2, 3, 2, 0).